

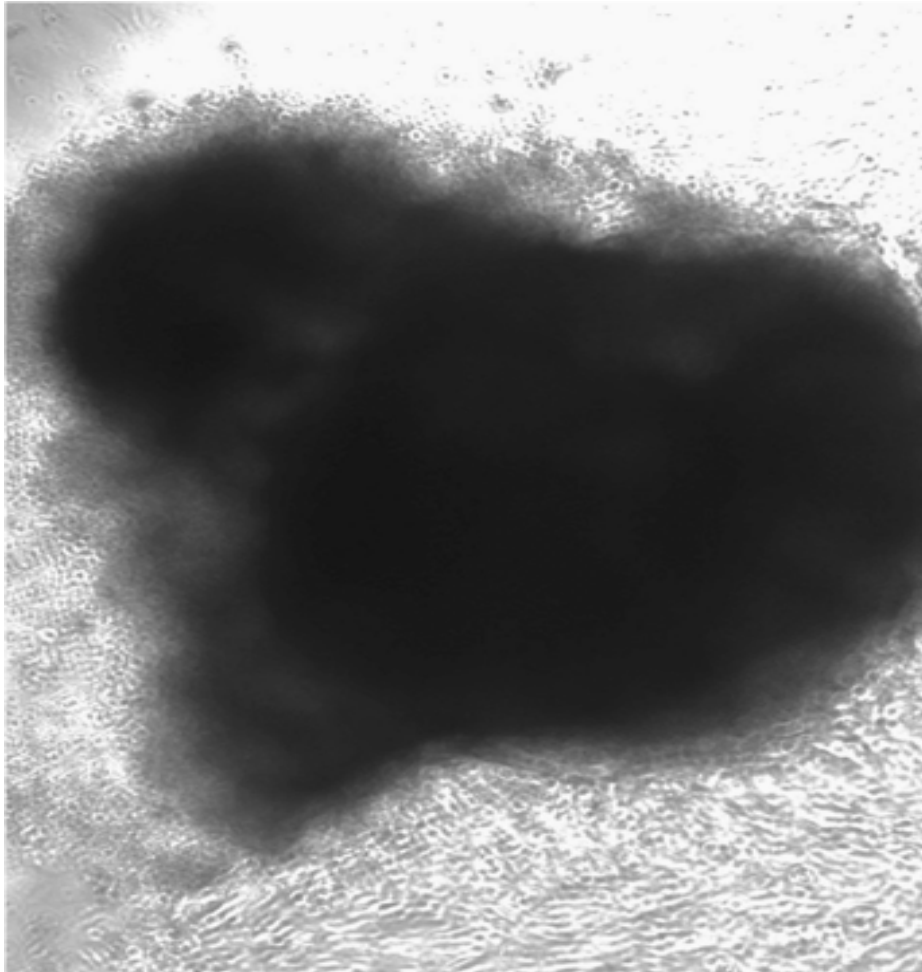
## Clinical Image

### **Title: A Heart in Human Pterygium Cells**

**Flavia Leao Barbosa<sup>1</sup>, Cintia S de Paiva<sup>1</sup>, De-Quan Li<sup>1</sup>, Michael E. Stern<sup>2</sup> and Stephen C. Pflugfelder<sup>1</sup>**

<sup>1</sup>Department of Ophthalmology, Baylor College of Medicine, Houston, Texas, USA

<sup>2</sup>Biological Sciences, Inflammation Research Program, Allergan, Irvine, USA



Fibroblast cells migrating from Pterygium explants after 6 days in culture, forming a heart. The digital image was obtained by epifluorescence microscope (Eclipse 400; Nikon, Garden City, NY) using a digital camera (DS-Fi1; Nikon). Magnification: 4X.