

Clinical Image

Snake Eye Sign

Himanshu Juneja^{1*} and Isha Pahuja²

¹Department of Neurology, PGIMS Rohtak, Haryana, India

²Department of Gastroenterology, PGIMS Rohtak, Haryana, India

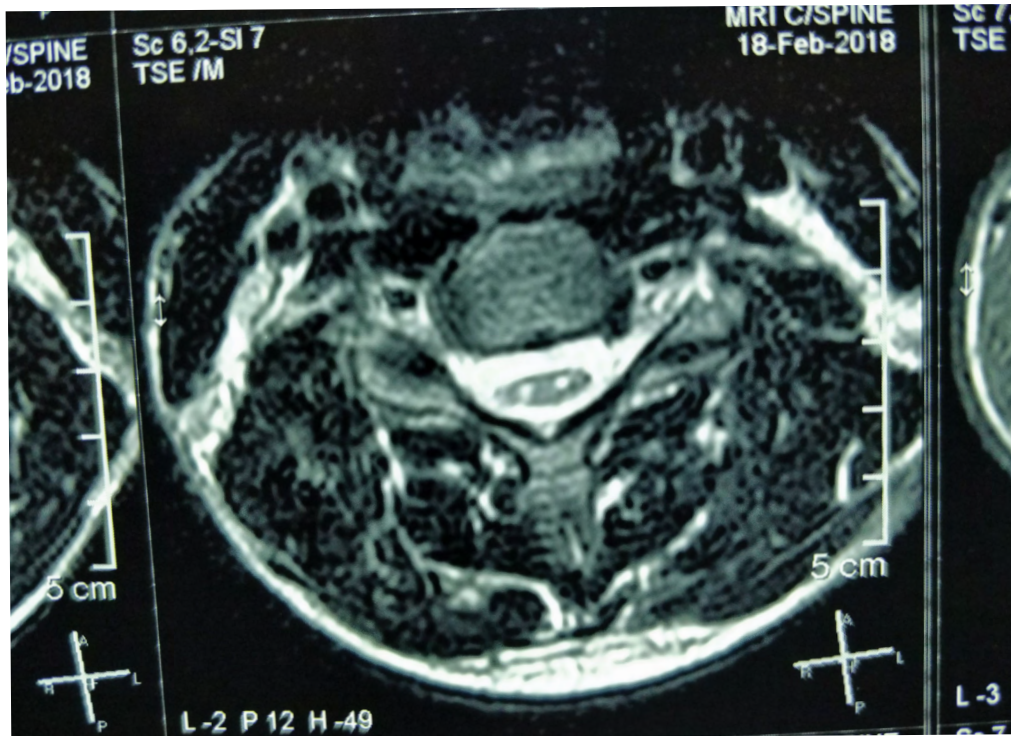


Figure 1: T2 weighted image of spinal cord.

Clinical Image

Snake eye appearance has been described in disorders like Amyotrophic lateral sclerosis (ALS), Spondylotic amyotrophy, Hirayama disease and ossification of posterior longitudinal ligament. On axial T2 weighted images of spinal cord anterior horn of grey matter appears hyperintense giving appearance of snake eyes (Figure 1).

*Corresponding author: Himanshu Juneja, Senior Resident, Department of Neurology, PGIMS Rohtak, Haryana, India, Tel: +919728208283; E-mail: himanshu.talkin@gmail.com

Citation: Juneja H, Pahuja I (2018) Snake Eye Sign. *Int J Clin Med Imaging* 4: 604. doi:10.4172/2376-0249.1000604

Copyright: © 2018 Juneja H, et al. This is an open-access article distributed under the terms of the Creative Commons Attribution License, which permits unrestricted use, distribution, and reproduction in any medium, provided the original author and source are credited.