

Clinical-Medical Image

Cutaneous Metastasis from Breast Cancer

Iliass Bourekba*, Hind Sahli, Hounayda Jerguigue, Rachida Latib, and Youssef Omor

Department of Radiology, Faculty of Medicine and Pharmacy of Rabat, Oncology National Institute, Ibn Sina University Hospital, Rabat, Morocco

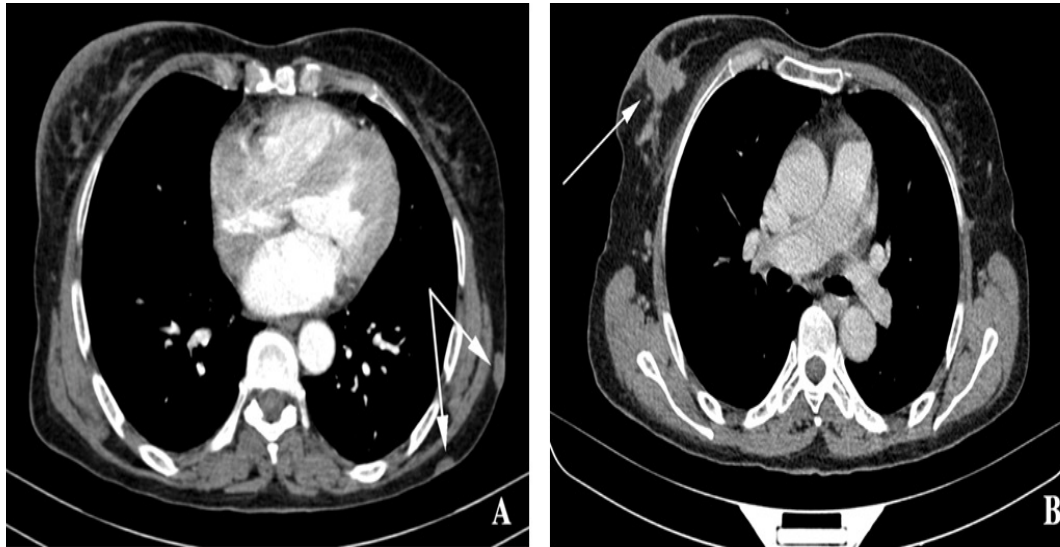


Figure 1: Axial views of a thoracic enhanced CT scan in portal phase, showing the cutaneous metastasis (A) and the breast tumor (B).

Clinical Image

Cutaneous metastasis (CM) are considered to be a rare finding and represent less than 1% of overall metastasis of solid tumors. However breast cancer accounts for 33% of all cases of CM which makes it one of the most frequent causes in adults (along with melanoma, colorectal cancer, lung and prostate cancer). CM are usually discovered incidentally during follow up CT scans, or by the patient as multiple mobile painless nodules appear on his body. It may also occasionally be the revealing clinical manifestation of recurrence of a previously treated. The figures above show the case of a 56-years-old patient being treated for a stage IV breast cancer and which the follow-up CT scan shows the appearance of several new lesions including multiple metastatic cutaneous nodules (Figure 1).

Keywords: Cutaneous metastasis; Cutaneous nodules

Declaration of Interests: The authors declare that they have no competing interests.

*Corresponding author: Iliass Bourekba, Department of Radiology, Faculty of Medicine and Pharmacy of Rabat, Oncology National Institute, Ibn Sina University Hospital, Rabat, Morocco, Tel: + 0677437948; E-mail: iliass.bourekba@gmail.com

Citation: Bourekba I, Sahli H, Jerguigue H, Latib R, Omor Y (2020) Cutaneous Metastasis from Breast Cancer. *Int J Clin Med Imaging* 7:744.

Copyright: © 2020 Bourekba I, et al. This is an open-access article distributed under the terms of the Creative Commons Attribution License, which permits unrestricted use, distribution, and reproduction in any medium, provided the original author and source are credited.